

KEY TIPS FOR COMMUNICATION



1. Face the child & remain at eye level during all interactions with the child

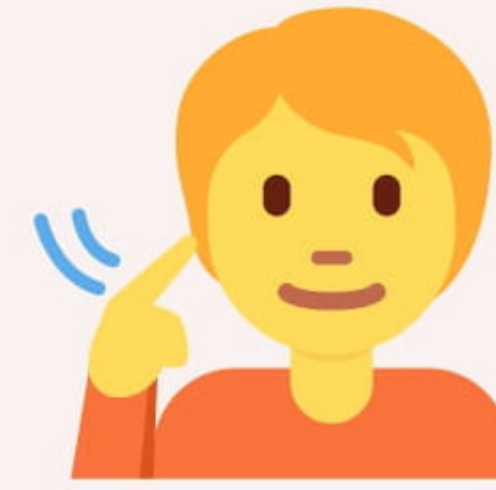


2. Gain their attention

For eg -

- Call their name
- Hold up a visual cue to 'listen'
- Use a sensory toy (Remove when giving instruction)

Raju,
listen!



3. Check your own language

- Use short & simple sentences
- Repeat key words
- Sign the key words
- Comment, don't question
- Use specific praise
- Give your child time to process

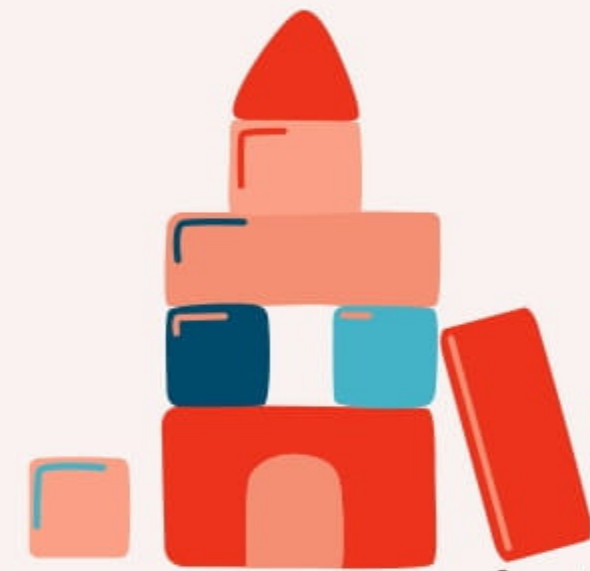
Tip : count to 6 before repeating the instruction.



4. Are you spending time to play with your child every day?

Set Up A Play Area

- Pick a comfortable location
- Have all toys in a box
- Encourage sensory play tools e.g. sandpits, play dough
- Encourage your child to look in the box and take out 1 or 2 items



Joint Interaction

Engage in joint interaction by copying what they do. (For e.g., if your child is rolling the car on his head, you can also roll it on yours. Watch how your child observes & engages with you in the activity)



Be specific during all forms of communication

Comment on what they/you are doing rather than asking 'What are you doing?' or 'What is this?'. By doing so you are encouraging them to look, telling them what is happening while repeating the main verb. (For e.g., you can say something like 'Look! Car is rolling...roll, roll, roll!')

Use the OWL Method



Observe your child's needs, focus of attention, facial expression & body language



Wait for your child to respond & try not to talk/answer for them. For e.g. Do not use commands/questions frequently when playing with them.



Listen to your child by giving your undivided attention. This will provide the security & encouragement to communicate.

Tidying up

After you have finished play indicate with a sign that it is now 'finished' & encourage them to tidy up.



Play is an opportunity to stimulate & build your child's language skills.

The way a child plays is also a strong indicator of their progress.

When playing with your child, look out for the following -

ATTENTION SPAN

- How long did they **attend** to that toy/game/activity of their choice?
- Did they display **joint attention** i.e. shared interest in an object with another person?

LISTENING ABILITY

- Did they show that they were **listening** to your instruction?

COMPREHENSION

- Did they **follow your instruction** & attempt to take turns?

ENGAGEMENT

- Was their **language interactive** during play?
- Were they **commenting** on what they saw?
- Did they **use requests**?

